

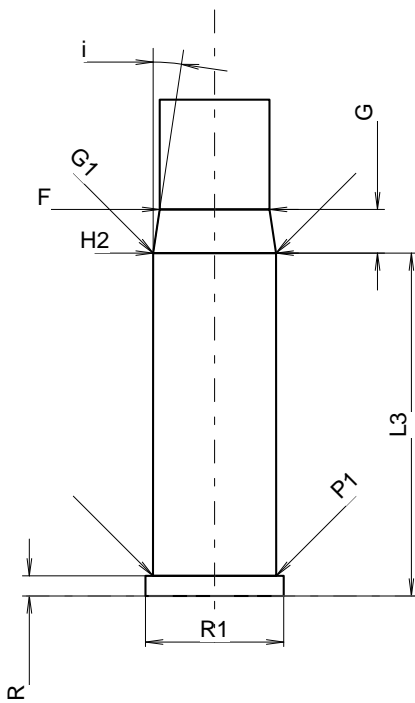
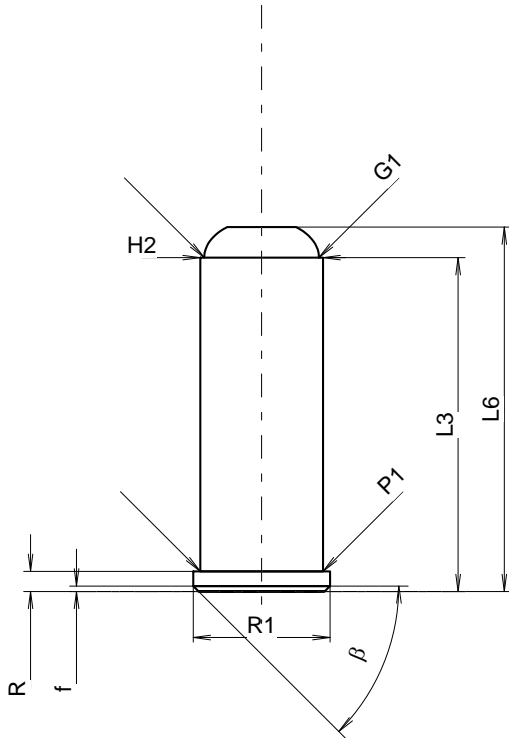
C.I.P.**32 S&W Long Wad Cut.**

TAB. IV

Date 84-06-14

Révision 00-06-07

Pays d'origine: DE/FI



Échelle 1.9:1

CARTOUCHE MAXI**Longueurs**

L1	=	
L2	=	
L3 ¹⁾	=	23.27
L4	=	
L5	=	
L6	=	25.40

Culot

R ¹⁾	=	1.40	-0.25
R1	=	9.53	
R3	=		
E	=		
E1	=		
e min	=		
δ	=		
f	=	0.38	
β	=	45°	

Chambre à poudre

P1	=	8.56
P2	=	

Cône de raccordement

α	=	
S	=	
r1 min	=	
r2	=	

Collet

H1	=	
H2 ¹⁾	=	8.56

Projectile

G1 ¹⁾	=	8.00
G2	=	
F	=	
L3+G ¹⁾	=	26.31

Pressions (Énergies)**Méthode transducteur**

Pmax	=	1550 bar
PK	=	1783 bar
PE	=	2015 bar
M	=	8.00

Autres indications

Fe ¹⁾	=	0.25
delta L	=	

CHAMBRE MINI**Longueurs**

L1	=	
L2	=	
L3 ¹⁾	=	23.90

Cuvette

R ¹⁾	=	1.40
R1	=	9.63
R2	=	
R3	=	
r	=	

Chambre à poudre

E	=	
P1 ¹⁾	=	8.59
P2	=	

Cône de raccordement

α	=	
S	=	
r1 max	=	
r2	=	

Collet

H1	=	
H2 ¹⁾	=	8.57

Prise de rayures

G1 ¹⁾ *	=	8.57
G ¹⁾ *	=	3.04
α1	=	
h	=	
s *	=	
i ¹⁾	=	8°30'
w	=	

Canon

F ¹⁾ *	=	7.66
Z ¹⁾	=	7.92

Rayures

b	=	2.41
N	=	5
u	=	476.00
Q	=	47.87 mm ²

Notes: 1) A' contrôler pour la sécurité
* Dimensions de base

Dimensions en << mm >>
Dimensions et tolérances pour les canons
d'épreuve: Voyez Annexe CR 1.