

Owner's Manual



TP9 SF ELITE / TP9 SF ELITE-S **Semi - Auto Pistols**

Cal. 9x19mm

CONTENT

1.Important Safety Message.....	3
2.Rules of the Pistol's Safety.....	4
3.Basics of Safe Gun Handling	8
4.Technical Specifications	10
5.Safety	12
6.To load the Pistol	12 - 14
7.To Fire the Pistol	15
8.Unloading the Pistol	16
9.Field Stripping	17
10.Reassembly - Sight Adjustment	18
11.Cleaning and Maintenance	19
12.Lubrication Warning	20
13.Limitations of Warranty	21
14.Storage	22
15.Exploded View and List of Parts	23 - 24

Congratulations on your purchase of the TP9 SF ELITE / TP9 SF ELITE-S Semi-Automatic Pistol.
With proper care and handling, it will give you many years of long, reliable service.
The TP9 SF ELITE / TP9 SF ELITE-S is chambered for the 9x19mm

We specifically disclaim any responsibility for damage or injury whatsoever, occurring as a result of the use of faulty, non-standard or remanufactured ammunition, any modifications or changes made to the firearm; improper use or unsafe handling of the firearm.

Always keep this manual with your firearm. Make sure you understand all the warnings, operation instructions and safety procedures. When you lend, give or sell the firearm, be sure this manual goes with it.

**FIREARMS SAFETY IS THE SOLE RESPONSIBILITY OF THE SHOOTER.
ALWAYS TREAT ALL FIREARMS AS IF THEY WERE LOADED AT ALL TIMES!**



IMPORTANT!

READ ALL INSTRUCTIONS AND WARNINGS IN THIS BOOKLET BEFORE USING THIS FIREARM.

⚠ IMPORTANT SAFETY MESSAGE

Children are attracted to and can operate firearms which can cause severe injuries or death. Prevent child access by always keeping gun locked, unloaded and separated from ammunition when not in use. If you keep a loaded firearm where a child obtains and improperly uses it, you may be fined or sent to prison

Firearm Safety Depends on You

A gun is only as safe as the person operating it. You can never be overly careful when handling a firearm. Carelessness is often the cause of shooting accidents, such as failing to keep the muzzle pointed in a safe direction, not being sure of your target and what is behind it, leaving ammunition in the chamber or using improper loads. Since a bullet can never be called back once fired, such errors in gun handling can result in the loss of life, severe injury or property damage thus, it is crucial for your safety and the safety of those around you that you learn the principles of safe gun handling and storage before you begin to use your new firearm. Be a safe shooter - please read this instruction book thoroughly even if this is not your first firearm purchase as not all firearms are the same. The first step in being a safe shooter is to learn the rules for the safe operation and handling of firearms. **There is nothing more important in gun handling than safety.**

Alcohol, Drugs and Guns Don't Mix. Make No Mistake About it!

Never handle firearms after consuming alcohol or taking drugs that can affect your judgment. Shoot sober! Alcohol, certain kinds of drugs and firearms don't mix. Safe firearms handling requires alertness and concentration on one's actions. You cannot handle a firearm safely after consuming alcohol. Never consume anything that can impair your judgment or physical coordination when handling a firearm. Never allow yourself to be distracted while handling a firearm

RULES OF THE PISTOL'S SAFETY

Rules Of The Pistol's Safety must be etched into your memory before you begin to handle firearms. These rules are intended to be understood and followed by all persons handling firearms in the field, on the range or at home. Please read, review and understand these rules before you begin to use or even take your new firearm out of its box. Remember, firearms safety depends on you! Memorizing these safety rules will help prevent gun accidents. Please study these safety rules before handling your firearm.

Rules #1

Always Keep the Muzzle Pointed in a Safe Direction

This is the most basic and most important safety rule. A safe direction is one in which an accidental discharge will not cause injury to yourself, to others or property damage. This is particularly important when loading or unloading your firearm. Never point your gun at anything you do not intend to shoot. Treat every gun as if it were loaded at all times.

Rules #2

Firearms Should Be Unloaded When Not Actually in Use

Firearms should only be loaded when you are in the field or on the target range or shooting area, ready to shoot. When not in use, firearms and ammunition should be secured in a safe place, separate from each other. Remember to unload your firearm completely so that there is no ammunition in the chamber or magazine. Before handling this or any firearm, or handing it to someone else, visually check the chamber and magazine to ensure they do not contain ammunition. Always keep the gun's action open when not in use. Never assume a gun is unloaded - even if you were the last person to use it. Never cross a fence, climb a tree, wade through a stream or perform any awkward movement with a loaded gun. Never lean or place a firearm where it could fall. When in doubt, unload your gun! Never pull or push a loaded firearm toward yourself or another person. Never carry a loaded gun in a scabbard, a holster not being worn or a gun case - common sense prevails in gun safety!

Rules #3

Don't Completely Rely on Your Gun's Safety

Treat every gun as though it could fire at any time, even if you are not applying pressure to the trigger. The "safety" on a firearm is a mechanical device which, like any such device, can become inoperable at the worst possible time and fail to function. By mistake, you may think the safety is "ON" when it actually is not. Or you may think your gun is unloaded when there is actually a round of ammunition in it. The safety serves as a supplement to proper gun handling but cannot serve as a substitute for common sense. Never handle a gun carelessly and assume that the gun won't fire just because "the safety is on." Never touch the firearm's trigger until you are ready to shoot. Keep your fingers away from the trigger when loading or unloading. Never pull the trigger when the safety is engaged or when the safety is positioned between the "SAFE" and "FIRE" positions. Never place your finger on the trigger unless you intend to fire.

Rules #4

Be Sure of Your Target And What Is Beyond It!

Once fired, a bullet (or shot charge) can never be called back; so before you shoot, know where the bullet is going and what it will strike. Be certain your shot will not injure someone or strike something beyond the target. Never fire in the direction of noise, a movement or at any object you cannot positively identify. Be aware that a .22 Short bullet can travel over 1 ¼ miles. A centerfire cartridge, such as the .30-06, can send its bullet over 3 miles. Shotgun pellets can travel 500 yards and a shotgun slug has a range of over a half mile. Make sure your shot has a safe backstop such as a hillside. Keep in mind how far the bullet will travel if it misses your intended target. Never shoot at a hard surface or water as the projectile may glance or ricochet in an unpredictable direction. Once fired, a bullet can never be called back. You are responsible for your actions and judgment.

Rules #5

Use the Correct Ammunition

Every firearm is designed to use a certain caliber or gauge of ammunition. It is important that you use the correct ammunition for your firearm. Information on the correct ammunition to use with your firearm appears in the firearm's instruction manual and the manufacturer's markings on the firearm itself. Use of the wrong ammunition, improperly reloaded ammunition or corroded ammunition can result in the destruction of the firearm, serious personal injury and/or death. Form the habit of examining every round of ammunition before you put it into your gun to ensure it is of the proper gauge or caliber and that it is in good condition.

Rules #6

If Your Gun Fails to Fire When the Trigger Is Pulled, Handle With Care

If a cartridge or shell does not fire when the trigger is pulled, follow Rules #1 and keep the firearm's muzzle pointed in a safe direction. Keep the muzzle down range with the action closed and wait at least 30 seconds (to ensure that the ammunition is not delayed in firing) before carefully opening the action, unloading the firearm and safely disposing of the ammunition.

Rules #7



Always Wear Eye and Ear Protection When Shooting

Exposure to shooting noise can permanently damage hearing. Flying debris, such as powder residue and ejected cartridge cases, can injure your eyes. Thus, it is only common sense to wear both eye protection (such as shooting glasses) and ear protection (such as a sound-muffling headset) whenever shooting. Also, wear eye protection when cleaning or disassembling your gun to ensure that cleaning solvent and tensioned parts (such as springs) do not come into contact with your eyes.

Rules #8

Be Sure the Barrel Is Clear of Obstructions Before Shooting

Discharging a firearm with an obstruction in the barrel can result in personal injury, property damage and/or death. Before you load your firearm, check the chamber and magazine to ascertain that no ammunition is inside. Also, check the inside of the barrel (called the "bore") to ensure it is free of obstructions. Even a small amount of mud, snow or excess lubricating oil or grease in the bore can cause excessive pressures resulting in a bulged or burst barrel which can injure or kill the shooter and bystanders. It is a good idea to make a habit of cleaning the bore and checking for obstructions with a cleaning rod just before each shooting session. If the noise or recoil experienced upon firing seems low or weak, or something doesn't feel "right," cease firing immediately and carefully check to make sure that there is no obstruction in the barrel. Placing an undersized shell or cartridge into a gun (such as a 20 gauge shell in a shotgun chambered for 12 gauge ammunition) can result in the smaller round of ammunition falling into the barrel and acting as an obstruction. When a round is subsequently fired, the barrel may burst, causing injury to the shooter and bystanders. For reference, re-read Rules #5.

Rules #9

Do Not Alter or Modify Your Gun and Have it Serviced Regularly

Firearms are complex mechanisms that are designed to function properly in their original condition. Any alterations or changes made to a firearm after its manufacture can make the gun unsafe and will void its warranty. Do not jeopardize your safety or the safety of others by altering the trigger, mechanical safety or other mechanisms of your firearm. You should have your firearm periodically checked for proper functioning and serviced by a qualified gunsmith.

Rules #10

Learn the Mechanical and Handling Characteristics of Your Firearm

Not all firearms operate the same way. The method of carrying, handling and operating firearms varies with the mechanical characteristics of each gun. Thus, you should never handle any firearm until you become familiar with the safe handling, loading, unloading and carrying procedures for that particular firearm, as well as the rules for safe gun handling in general.



LEAD WARNING!

Discharging firearms in poorly ventilated areas, cleaning firearms or handling ammunition may result in exposure to lead and other substances known to cause birth defects, reproductive harm and other serious injuries. Have adequate ventilation at all times when shooting. Wash hands thoroughly after exposure.


Basics of Safe Gun Handling

1. Always keep the muzzle pointed in a safe direction.
2. Firearms should be unloaded when not actually in use.
3. Don't totally rely on your gun's safety.
4. Be sure of your target and what is beyond it.
5. Use the correct ammunition for your firearm.
6. If your gun fails to fire when the trigger is pulled, handle with care.
7. Always wear eye and ear protection when shooting and cleaning.
8. Be sure the barrel is clear of obstructions before shooting.
9. Don't alter or modify your firearm and have your firearm(s) serviced regularly.
10. Learn the mechanics and handling characteristics of the firearm you are using.

Safe gun handling depends on you! A safe shooter is a knowledgeable shooter.

WARNING! STOP SHOOTING IMMEDIATELY AND UNLOAD YOUR FIREARM

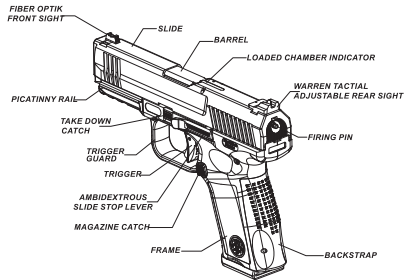
If your firearm develops a mechanical malfunction; binding or stoppage, spitting powder/gas, a cartridge primer is punctured, a cartridge case is bulged or ruptured, or the sound on firing does not sound quite right. Do NOT try one more shot, but unload your firearm and take it and the ammunition to a qualified gunsmith. Do not assume that the firearm is empty merely because you checked the chamber. You must also check the bore for an obstruction inside the barrel.

 **WARNING!** Always ensure that the ammunition you are using is clean, undamaged and of the proper caliber before loading your pistol. The manufacturer and distributor of this pistol disclaim any liability for the use of remanufactured, reloaded or hand-loaded ammunition. Protect your investment in this fine firearm by using only factory fresh, quality ammunition. The use of improper caliber or low quality ammunition could result in injury, death and/or property damage upon firing. Remember, firearms safety depends on you!

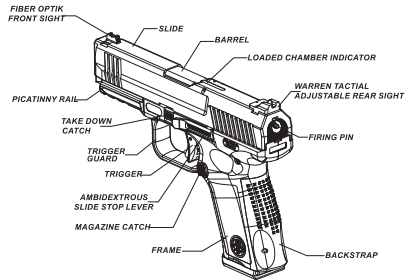
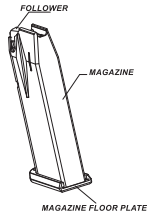
TECHNICAL SPECIFICATIONS

Model	TP9 SF ELITE	TP9 SF ELITE - S
Caliber	9x19 mm	9x19 mm
Operating System	Single Action	Single Action
Fire Control	Striker Fired	Striker Fired
Safety System	Firing Pin Block Trigger Safety Lever	Firing Pin Block Trigger Safety Lever Manual Safety Lever
Magazine Release	Right or Left Hand Adjustable	Right or Left Hand Adjustable
Slide Lock	Ambidextrous	Ambidextrous
Striker Indicator	Red is visible in single action mode	Red is visible in single action mode
Backstrap	Complete with 2 sizes	Complete with 2 sizes
Sights	Warren Tactical Adjustable Rear Sight Fiber Optic Front Sight with red insert	Warren Tactical Adjustable Rear Sight Fiber Optic Front Sight with red insert
Rail	MIL STD 1913 Picatinny Rail	MIL STD 1913 Picatinny Rail
Overall Length	185 mm	185 mm
Height	134 mm	134 mm
Width	37 mm	37 mm
Barrel Length	106,5 mm	106,5 mm
Weight without magazine	805 gr	805 gr
Magazine Capacity	15	15

Diagram showing major operational parts of the TP9 ELITE & ELITE - S Semi Auto Pistol



TP9 SF ELITE



TP9 SF ELITE-S

Illustration #1

The study of this picture will aid you in understanding the instructions in this booklet.

Safety:

Both the TP9 SF Elite and TP9 SF Elite-S have an internal firing pin block which prevents the firing pin from moving forward, unless the trigger is pulled. They both also feature a trigger safety which must be fully depressed to pull the trigger. **{See Illustration #2}**. Only the TP9 SF Elite-S has a manual safety lever that blocks the travel of the trigger. **{See Illustration #2A}** The manual safety lever just blocks the travel of trigger so when it is ON (**Illustration #2A**), the user will be unable to pull the trigger.



Illustration # 2



Illustration # 2A

To Load the Pistol

- ⚠ **Warning!** Before loading, make sure the inside of the barrel is free of dirt or other obstructions.
- ⚠ **Warning!** Always check each cartridge to ensure it is of the correct caliber and in good condition before loading the firearm.
- ⚠ **Warning!** Never load a firearm indoors. An accidental discharge will cause property damage, serious injury and/or death! Never use live ammunition to function test your pistol indoors.
- ⚠ **Warning!** Keep fingers away from the trigger while loading.
- ⚠ **Warning!** Keep muzzle pointed in a safe direction

1. Load the magazine with the correct ammunition by pressing the cartridges one at a time down and under the magazine's feed lips; the cartridges will automatically alternate from side to side. Holding the magazine in your primary hand and gently tapping it against your opposite palm will help seat the cartridges and assure good feeding. When loading the rounds into the magazine, ensure the base of the cartridge is in contact with the back of the magazine. **(See Illustration #3.)**
2. Keeping your finger outside the triggerguard, pick up the firearm with one hand and the magazine with the other. Insert the magazine into the magazine well, after seating the magazine pull down on it to ensure it is locked in place. **(See Illustration #4.)**



Illustration # 3



Illustration # 4

3. Grasp the slide under the rear sight and move it fully rearward and release it. As it moves rapidly forward under spring pressure. The slide will strip a round from the magazine and insert it into the chamber. (See **Illustration #5.**) The pistol is now loaded and ready to fire. The red striker indicator will be visible. (See **Illustrations #6.**)



Illustration # 5



Illustration # 6

⚠ Warning! The pistol is now loaded and will fire if the trigger is pulled! Handle with extreme caution and keep the muzzle (the end of the barrel) pointed in a safe direction!

To Fire the Pistol

1. Keeping the 10 Rules of Firearm Safety in mind, aim the pistol downrange at the target. When firing this pistol you may need to experiment with different shooting styles until you find the method which best suits your sporting activity. Remember to always fire the pistol in such a manner that you can maintain a safe muzzle direction at all times.
2. If the pistol is decocked; to reset the single action feature, keeping the muzzle pointed in a safe direction, grasp the rear of the slide and move it rearward approximately 6-7 mm which will set the pistol into single action mode. Align your sights on the target.
3. Place your finger inside the trigger guard and on the trigger. Slowly pull the trigger while depressing the trigger safety fully and continue pulling until the striker releases.
4. Being a semi-automatic pistol, the pistol's action (its moving parts) will cycle after the first round is fired. As the slide moves rearward, the extractor will pull the empty cartridge case from the chamber and eject it from the pistol. (Make sure there are no bystanders in close proximity on either side of the pistol who could be injured by the ejected cartridge case or gasses expelled from the pistol.) NOTE: If the trigger is pressed again, the pistol will fire! Keep the pistol pointed in a safe direction. Keep your fingers away from the muzzle when firing the gun.
5. Firing may be continued in this manner until the magazine is empty.

⚠ Warning! The barrel will be very hot after firing!

⚠ Warning! Keep all parts of your body away from the muzzle!

⚠ Warning! Always unload your pistol immediately after use and prior to cleaning and storage to minimize the risk of an accidental discharge. If your pistol ever fails to fire keep it pointed at the target for at least 30 seconds in the event of a hangfire (slow ignition). If the round still does not fire, remove the magazine, eject the cartridge by carefully opening the slide and discard the bad round. Reload the pistol to resume firing.

Unloading the Pistol

 **Warning!** Keep muzzle pointed in a safe direction.

1. While keeping the pistol pointed in a safe direction. Hold the pistol with one hand, depress the magazine release button with your thumb and the magazine should fall into your free hand. **(See Illustration #7.)**
2. Grasp the slide under the rear sight and move it fully rearward, holding the slide fully open inspect the chamber to ensure it is empty.
3. Allow the slide to go forward on the empty chamber in a safe direction. Pull the trigger to lower the striker. Note: When the striker is lowered, the red striker indicator is not visible. **(See Illustration #6).**

⚠ Warning! The pistol will fire if the magazine is removed and if the trigger is pulled when a cartridge is in the chamber.

WARNING! If dropped, any firearm could fire when there is a cartridge in the chamber.

Field Stripping

Please note the TP9 SF Elite and TP9SF Elite-S disassemble and assemble differently than other pistols in the TP series. Failure to follow the disassembly/assembly instructions can damage your pistol!

⚠ Warning! Before beginning the disassembly process, check to ensure the pistol is not loaded. To do so, follow the procedures detailed in the Unloading the Pistol section on **page 16**.

⚠ Warning! Wear eye protection, such as shooting glasses or goggles, when disassembling your firearm to protect your eyes from tensioned parts, such as springs that could be dislodged during disassembly.

1. Before beginning, remove **all** live ammunition, loaded magazines and other firearms from the working area. Remove the magazine from the pistol. To do so, follow the procedures detailed in the Unloading the Pistol section on **page 16** and confirm the chamber is empty.
2. While remembering to maintain a safe muzzle direction, secure the unloaded pistol firmly in a supported location such as your lap, or on a table. Pull the trigger to lower the striker. Note: When the striker is lowered, the red striker indicator is not visible. **(See Illustration #6.)**
3. While holding the pistol in your primary hand, grasp the takedown catches located above the trigger. Pull them down with your other hand, while using your thumb on your primary hand to push the slide forward (please note the slide will only move forward about 2.5 cm). Lift up on the slide while moving it back and forth, until it lifts free of the frame. **(See Illustration #8 and #9.)**
4. Holding the slide with your primary hand, use your secondary hand to push the recoil spring toward the muzzle and lift it free. Lift the barrel slightly and push it forward toward the muzzle. Then you can pull it back and lift it free from the slide.



Illustration # 7



Illustration # 8



Illustration # 9



Illustration # 10

Reassembly

Warning! Before beginning the re-assemble process, check to ensure the pistol is not loaded. To do so, follow the procedures detailed in the Unloading the pistol section on **page 16**.

Warning! Wear eye protection, such as shooting glasses or goggles, when reassembling your firearm to protect your eyes from tensioned parts, such as springs that could be dislodged reassembly.

Please note the TP9 SF Elite and TP9SF Elite-S disassemble and assemble differently than other pistols in the TP series. Failure to follow the disassembly/assembly instructions can damage your pistol!

1. Hold the slide in your primary hand with the muzzle side facing the ground. Drop the barrel into the slide, turn the slide up so that the muzzle is facing the sky the barrel will slide into place.
2. While holding the slide in your primary hand, place the recoil spring in the muzzle end of the slide. **NOTE: The flat end of the recoil spring must be facing the chamber. (See Illustration #11.)** Use your thumb on your secondary hand to press the spring towards the muzzle and slightly down.
3. Line the slide cutouts up with the frame rails (See illustration #12 & 13) than set the slide onto the frame. Move the slide rearward about 2.5 cm locking it to the frame.



Illustration # 11



Illustration # 12






Illustration # 13

Sight Adjustment

1. The rear sight is drift windage adjustable. For bullet hits to the right of point of aim (POA), move the rear sight left. For bullet hits left of POA, move rear sight right.
2. The front sight is also drift windage adjustable as the rear sight.

Cleaning and Maintenance

-  **Warning!** Before beginning the cleaning process, check to ensure the pistol is unloaded. . (See the **Unloading the Pistol** section on **page 16**)
-  **Warning!** You should wear eye protection, such as shooting glasses or goggles, when cleaning your firearm to protect your eyes from tensioned parts, such as springs, that may become dislodged during disassembly.
- 

1. Obtain a quality cleaning kit or use the one if supplied within the pistol case and in addition to instructions in this section, thoroughly review the manufacturer's instructions.
2. Follow the pistol field stripping procedures. (See page 17)
3. To clean the barrel, select the correct caliber cleaning brush and attach it to a cleaning rod.
4. Dampen the screw-in nylon bore brush with cleaner, lubricant, protectant (CLP) and then push the brush through the barrel several times from the chamber to the muzzle.
5. Remove the brush and attach a correctly sized cloth cleaning patch to the cleaning rod and push it through the barrel several times to remove loosened fouling.
6. Repeat this process with the brush and cleaning patches until a final patch comes out clean after swabbing the bore. Lightly oil the bore. Apply light coating of CLP to the outer surface of the barrel.
7. Remove shooting residue from the slide and barrel's action parts by brush and cloth supplied. Apply light coating of CLP to the rails, trigger bar and inside of the ejector assembly of frame and rails on the slide, firing pin block together with the slide's inner side where the barrel operates.

Lubrication Warning

Firing a firearm with oil, grease or any other material even partially obstructing the bore may result in damage to the firearm and injury to the shooter and those nearby. Do not spray or apply lubricants directly on ammunition. If the powder charge of a cartridge is affected by the lubricant, it may not be ignited, but the energy from the primer may be sufficient to push the bullet into the bore where it may become lodged. Firing a subsequent bullet into the obstructed bore will damage the firearm and may cause injury to the shooter and those nearby. Use lubricants properly. You are responsible for the proper care and maintenance of your firearm and ammunition.

Warning Concerning Alterations and Aftermarket Parts!

Altering or modifying parts and/or internal safeties is dangerous and will void the warranty. This firearm was manufactured to perform properly with the original parts and accessories as designed. It is your duty to make sure any parts you buy are made for this firearm and are installed correctly and that neither the replacements nor originals are altered or changed. Your gun is a complex precision tool with many parts that must relate correctly to other parts in order for proper and safe operation. Putting a gun together wrong or with incorrect or modified parts can result in a damaged gun, danger, and injury or death to you and others through malfunction. Always have a qualified gunsmith work on your gun or at least check any work not performed by a gunsmith.

Limitations Of Warranty

The Canik warranty will be void if any of the following occur:

1. The product is not properly registered;
2. The instructions in the manual are not followed;
3. Your TP9 SF ELITE / TP9 SF ELITE-S pistol or any of its parts are altered or modified from their original state;
4. Damage is caused by misuse, abuse or improper maintenance;
5. Your TP9 SF ELITE / TP9 SF ELITE-S pistol is disassembled beyond the instructions in the manual;
6. Reloaded , remanufactured , or hand-loaded ammunition, or ammunition of a different caliber than your TP9 SF ELITE / TP9 SF ELITE-S pistol is used; or
7. TP9 SF ELITE / TP9 SF ELITE-S used for range rentals or other similar programs not eligible

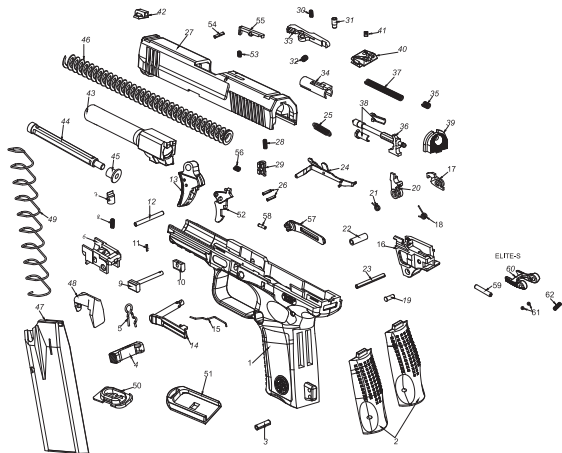
Storage

CHECK TO ENSURE THAT YOUR PISTOL IS NOT LOADED BEFORE STORING IT.

Your pistol should be thoroughly cleaned and lightly lubricated before being put away for storage. A light coating of good quality gun oil should be applied to all exposed surfaces. Remove all excess lubrication and use a cleaning rod and cleaning patch to make sure that the bore (the inside of the barrel) is dry and free of obstructions when you remove your pistol from storage and before firing it. ALWAYS STORE FIREARMS AND AMMUNITION SEPARATE FROM EACH OTHER AND OUT OF REACH OF CHILDREN. ALWAYS SECURELY LOCK YOUR FIREARMS AND AMMUNITION IN SEPARATE LOCATIONS WHEN NOT IN USE. REFERENCE YOUR HOME STATE'S FIREARMS REGULATIONS FOR SAFE STORAGE OF FIREARMS AND AMMUNITION.

Note: The use of reloaded, remanufactured, hand-loaded or other non-standard ammunition may result in damage to the pistol and injury or death to the shooter and/or bystanders. The manufacturer does not accept responsibility for malfunctions resulting from use of such ammunition.

TP9 SF ELITE SERIES EXPLODED VIEW



TP9 SF ELITE PART LIST

1-FRAME	21-SEAR LEVER SPRING	41-REAR SIGHT SCREW
2-BACKSTRAP	22-SEAR LEVER BAR	42-FRONT SIGHT
3-BACKSTRAP PIN	23-EJECTOR PIN	43-BARREL
4-MAGAZINE CATCH	24-TRIGGER BAR	44-RECOIL SPRING GUIDE
5-MAGAZINE CATCH SPRING	25-TRIGGER SPRING	45-RECOIL SPRING GUIDE STOP
6-LOCKING BLOCK	26-TRIGGER AND TRIGGER BAR PIN	46-RECOIL SPRING
7-LOCKING LEVER	27-SLIDE	47-MAGAZINE CASE
8-LOCKING LEVER SPRING	28-FIRING PIN BLOCK SPRING	48-MAGAZINE FOLLOWER
9-TAKE DOWN CATCH	29-FIRING PIN BLOCK	49-MAGAZINE SPRING
10-TAKE DOWN CATCH PIECE	30-EXTRACTOR PIN SPRING	50-MAGAZINE BUTT PLATE CATCH
11-TAKE DOWN CATCH PIN	31-EXTRACTOR PIN	51-MAGAZINE BUTT PLATE
12-LOCKING LEVER PIN	32-EXTRACTOR SPRING	52-TRIGGER SAFETY LEVER
13-TRIGGER	33-EXTRACTOR	53-LOADED CHAMBER INDICATOR SPRING
14-SLIDE STOP LEVER (LEFT)	34-FIRING PIN COLLET	54-LOADED CHAMBER INDICATOR PIN
15-SLIDE STOP SPRING	35-FIRING PIN RETURN SPRING	55-LOADED CHAMBER INDICATOR
16-EJECTOR	36-FIRING PIN	56-TRIGGER SAFETY LEVER SPRING
17-SEAR	37-FIRING PIN SPRING	57-SLIDE STOP LEVER (RIGHT)
18-SEAR SPRING	38-FIRING PIN RETAINER	58-SLIDE STOP LEVER PIN
19-SEAR PIN	39-SLIDE END GAP	
20-SEAR LEVER	40-REAR SIGHT	ELITE-S
		59-SAFETY LEVER PIN
		60-SAFETY LEVER
		61-SAFETY LEVER DETENT
		62-SAFETY LEVER DETENT SPRING



ISO-9001



PRODUCTION PERMIT



FACILITY SECURITY



AQAP-2110



- All fire arms of Canik , are tested by Samsun Domestic Defense and Industry Corporation before they are displayed for sale.
- Canik fire arms are guaranteed by Samsun Domestic Defense and Industry Corporation

Samsun Yurt Savunma Sanayi ve Ticaret A.Ş.
Şabançoğlu OSB Mahallesi Ulubatlı Cad. No: 2B/B Tekkeköy / SAMSUN
Tel: +90 362 266 66 71 pbx - Fax: +90 362 266 66 72

İstanbul District Office ARAL INDUSTRY Corporation
Taşdelen Mahallesi, Sırrı Çelik Bulvarı No: 7 Çekmeköy / İSTANBUL
Tel: +90 216 484 42 70 pbx - Fax: +90 216 484 42 76

Ankara District Office
Döğol Caddesi 15/2 Tandoğan / Ankara / TURKEY
Tel: +90 312 222 30 74 - Fax: +90 312 222 22 45

www.canikarms.com • email: info@canikarms.com

Samsun Domestic Defence and Industry Corporation is a sub company of ARAL INDUSTRY Corporation



AQAP-2110

C55.56-KK-EN-17-13-a